



THE IVORY I AND II



Optional Elevation A




- ✔ 3-4 Beds
- ✔ 2.5 Baths
- ✔ 1,720-1,900 SF
- ✔ 1 Car Garage

Luxury Townhomes

Open Concept Floor Plan

Luxury. Comfort. Value. The Ivory.
Roomy 3-4 bedroom townhomes featuring newly designed open concept floor plan and a stunning exterior feel. See a sales agent today for more information about this home or visit Burkentine.com.

FOLLOW

-  /BurkentineRealEstateGroup
-  @BurkentineRealEstateGroup
-  @BurkentineREG

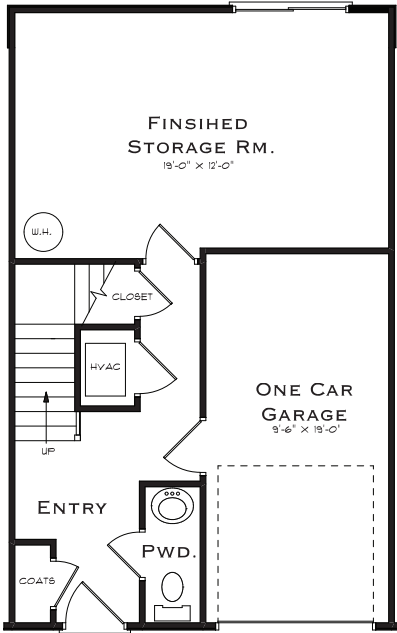


CONTACT

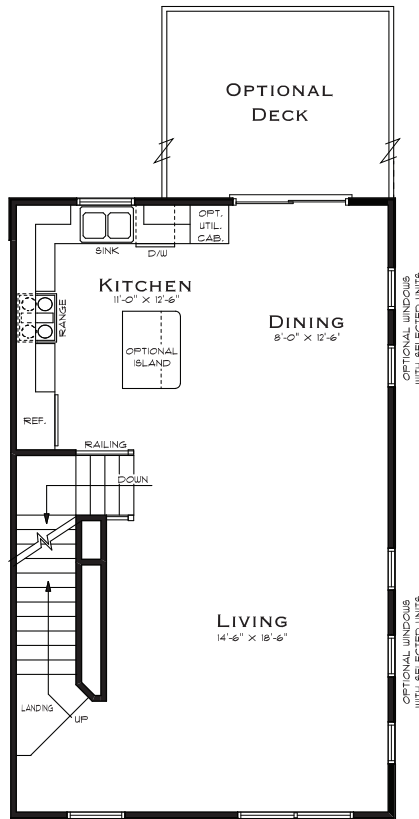
1640 Simpson Drive
Hanover, PA 17331

717/ 698-2614

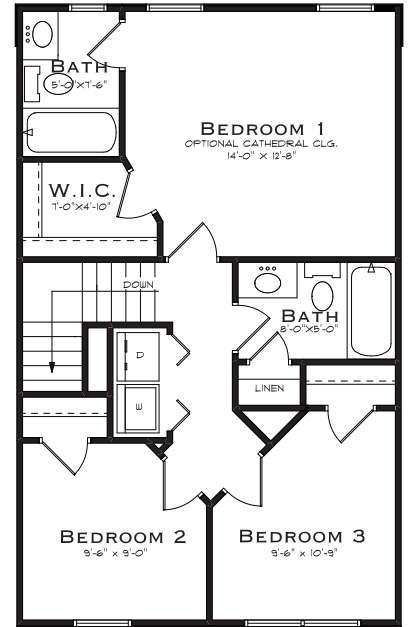
THE IVORY I



FIRST FLOOR



SECOND FLOOR



THIRD FLOOR

THE IVORY II

